

# Welcome to Bemidji

and thank you for visiting Sanford Health

**We're glad you're here.**



**SANFORD**

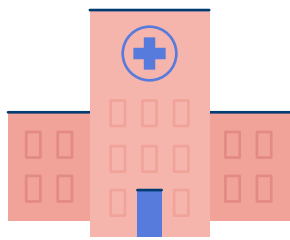
**We look forward to showing you what makes Sanford Health unique.** We want to make sure you enjoy your time with us and have all the information you need throughout your stay.

Need assistance? Contact our Employee Service Center: (877) 243-1372

# SANFORD HEALTH SYSTEM

Sanford Health, one of the largest health systems in the United States, is dedicated to the integrated delivery of health care, genomic medicine, senior care and services, global clinics, research, and affordable insurance.

**Headquartered in Sioux Falls, South Dakota, the organization includes:**



**44**  
medical centers



**269** Good Samaritan  
Society senior care locations



**1,450+**  
physicians



in **26** states



and **10+** countries

## About Sanford Health in Northern Minnesota



Two hospitals and  
10 clinics



More than 160  
providers



118-bed  
hospital



Serving a population  
of 142,505

**Expansions in the areas of heart, cancer, orthopedics, sports medicine, and women's health**

# BEMIDJI MINNESOTA

## SANFORD HEALTH LOCATIONS

Click icons for exact locations

### 1 Medical Center

- Heart & Vascular Center
- Orthopedics & Sports Medicine Center
- Emergency Room
- West Surgery Center
- Kidney Dialysis Unit

### 2 Main Clinic & Pharmacy

- Southeast Surgery Center
- Joe Lueken Cancer Center
- Infusion Pharmacy

### 3 Anne St. Clinic

- Healthcare Accessories

### 4 Anne St. Clinic Pharmacy

- Walk-in Clinic

### 5 Sleep Center

### 6 Home Care & Hospice

### 7 PrimeWest Residential Support Center

### 8 WoodsEdge Senior Living Campus: Neilson Place, Trillium & WindSong

### 9 Profile

### 10 Release of Information

### 11 Baker Park Senior Housing

### 12 Downtown Eye Center & Optical

### 13 Headwaters, ACT

### 14 Behavioral Health Center

### 15 Occupational Medicine Clinic



# BEMIDJI COMMUNITY



Surrounded by breathtaking natural beauty, the Bemidji community graces the shore of Lake Bemidji, one of more than 400 lakes in the region. Named a “top town” by Outdoor Magazine, Bemidji is a four-season destination.

## Bemidji is a center for:



RETAIL



EDUCATION



MEDICINE



GOVERNMENT

**Bemidji has a cost of living 17% below the national average.**

## Outdoor Recreation



Several public and private golf courses along with lake activities like hiking, camping, fishing, and water sports



More than 250 acres of land dedicated solely for public use, with 160 acres of highly maintained parks and more than 8,000 feet of shoreland

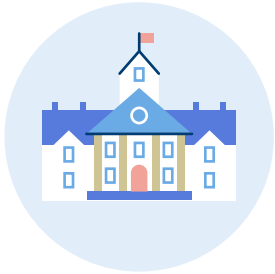


A variety of bike trails ranging from 6 to 160 miles



Cross-country skiing, ice fishing, snowmobiling, curling, sleigh rides, and more

## Colleges & Universities



**40,000 students** attend post-secondary institutions within 125 miles of Bemidji, including:

- Bemidji State University
- University of North Dakota
- Northwest Technical College
- Oak Hills Christian College
- White Earth Tribal and Community College
- Itasca Community College
- Northland Community and Technical College
- Central Lakes College Brainerd
- Hibbing Community College
- Minnesota State Community and Technical College (Wadena)
- University of Minnesota (Crookston)
- Minnesota State Community and Technical College (Detroit Lakes)
- Rainy River Community College

## Arts & Entertainment



Watermark Art Center



The Sanford Center



Art in the Park Event



Paul Bunyan Playhouse



BSU Music & Arts



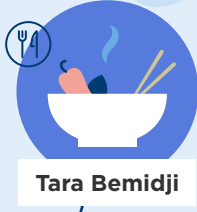
Sculpture Walk

# BEMIDJI

## MINNESOTA

### WHAT TO EAT & WHERE TO STAY

Click icons for exact locations



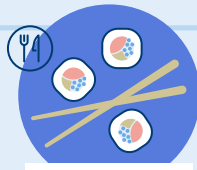
Tara Bemidji



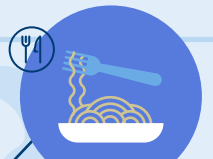
Turtle River Chop House



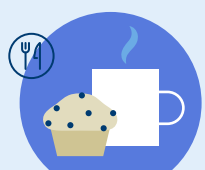
Dave's Pizza



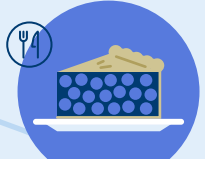
Wasabi



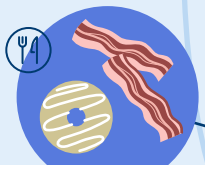
Tutto Bene



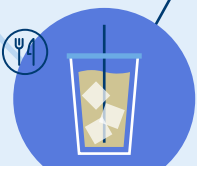
Wild Hare Bistro and Coffee House



Minnesota Nice Cafe



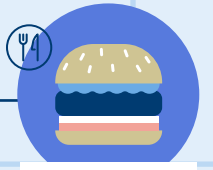
Raphael's Bakery



Cantabria Coffee Co



Bar 209



Green Mill



Hampton Inn & Suites



Country Inn & Suites



Doubletree by Hilton



Hotel



Restaurant



Sanford Health location

### HOW TO GET AROUND?

Rental Car

• Avis • Enterprise

Ride Sharing

• Lyft